

# CLIENT: HITACHI RAIL

## Product: Multi-Point Lifting Frame



### Project Overview:

Durham Lifting were contracted by Hitachi Rail to design, manufacture, paint and proof load test 1 off 700 kg swl multi-point lifting frame. The lifting frame had to operate within reduced head room and included 10 lifting points to ensure the integrity of the HVAC unit being lifted.

### Statistics:



**Delivery time:**  
4 weeks



**Size:**  
1.9 m x 3.7 m



**Location:**  
County Durham



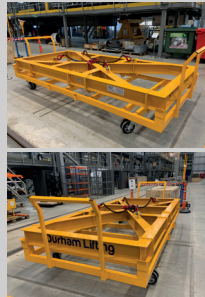
**SWL:**  
700 kg



**Team involved:**  
Design & fabrication



**Standard:**  
BS EN:1993-1-1:2005  
Eurocode 3



### Scope of Work:

- Concept design
- Provision of all materials
- Fabrication, machining and assembly of all items
- Inspection and proof load testing
- Painting
- Coordination of equipment transportation to site
- Project management for concept to completion
- Supply of full certification and documentation

### Product Overview:

Multi-Sec lifting and spreader frames are recommended for loads that have more than two lifting points; they can also be the ideal lifting equipment for when headroom is limited, and can be designed for general purpose or as a bespoke solution for a specific application.

