

BETA SILVERLINE ELECTRIC WIRE ROPE WINCHES

BETA SILVERLINE Electric winch Capacities: 125 - 3200kg

Electric winches of the BETA SILVERLINE range are used for lifting, towing and positioning of loads. The proven technology and specified equipment features make the winch the ideal product for standard applications.

Features and benefits include:

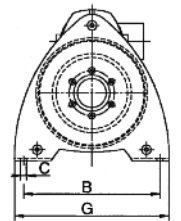
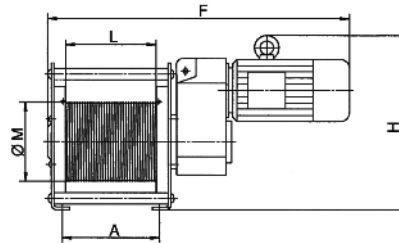
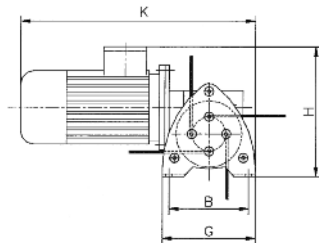
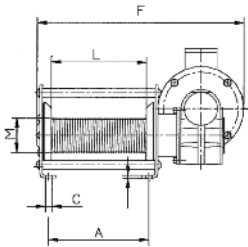
- The electrically released spring pressure disc brake safely holds the load also in the event of a power failure.
- Powerful three-phase AC drives for multi-range voltage 380 - 420 V, 50Hz or 440 - 460 V, 60Hz. Motor type of enclosure IP55, duty factor 40% ED.
- Electronic overload protection from 1000 kg lifting load as standard.
- The maintenance-free, oil lubricated gearbox has quiet running characteristics due to milled and ground gears with helical teeth.
- All parts with high-quality two component paint (RAL 5015, coat thickness approx. 120 µm), rope drum zinc-plated in addition.
- Standard rope drum of grooved design, with large rope capacity.
- Variable rope lead-in due to two rope attachment points (left and right).
- Units are supplied inclusive of contactor control and gear limit switch.
- Complies with accident prevention regulations BGV D8.



SL0




SL1, SL2, and SL3



Article	Size	Cap. 1st layer kg	Speed m/min	Class.	V	Power kW	Rope dia. mm	Useable rope length		A mm	B mm	C mm	F mm	G mm	H mm	L mm	M mm
								1st layer mtr	top layer mtr								
040063758	SL0	250	2.5	1 Bm	400v	0.25	4	7	46.7	185	170	12	389	432	241	180	64
031140006	SL0	250	4.7	1 Bm	400v	0.37	4	7	46.7	185	170	12	389	432	241	180	64
031140015	SL0	250	3.7	1 Bm	230v*	0.55	4	7	46.7	185	170	12	389	432	241	180	64
040062946	SL1	500	6.8	1 Am	400v	0.75	6	6.7	48.9	215	300	13.5	740	340	340	200	86
040062989	SL1	630	6.8	1 Bm	400v	0.75	6	6.7	48.9	215	300	13.5	750	340	345	200	86
040062990	SL2	980	6	1 Am	400v	1.1	9	11	77.5	270	400	18	920	465	475	250	175
040062993	SL2	1250	6	1 Am	400v	1.1	9	11	77.5	270	400	18	930	465	480	250	175
040062996	SL3	2000	6.8	1 Bm	400v	2.2	12	10	74.5	320	510	22	1070	570	614	300	175

- * 230v unit shown above is single phase.
- Recommended steel rope DIN 3069 FE-znk-1960.
- All units are supplied to design norm D8.
- All Pfaff winches are supplied WITHOUT wire rope.

 Please contact the sales team with your enquiry to receive a quotation.