



Durham
Lifting 

www.durhamlifting.co.uk

MULTI-SEC MODULAR SPREADER BEAMS PROVIDE THE IDEAL SOLUTION FOR AN ARRAY OF LIFTING SOLUTIONS. VERSATILE AND COST EFFECTIVE, THE RANGE OFFERS A WIDE VARIETY OF SPANS, CONFIGURATIONS AND CAPACITIES TO SUIT YOUR SPECIFIC LIFTING APPLICATION.

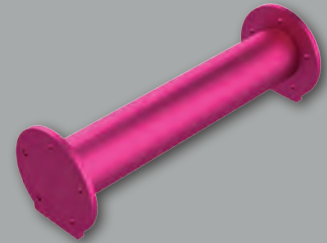
Designed and manufactured in the UK in accordance with relevant standards. Durham Lifting Multi-Sec modular spreader assemblies for up to 250Te are in stock and available for worldwide distribution. Other sizes are available upon request.



END UNIT



DROP LINK



STRUT

Multi-Sec can be configured into virtually any lifting rig to enable even the most complicated of structures to be safely lifted.

What Size Beam Do I Need?

- 1 Select the span you require . . .
- 2 Select the WLL you need for that span . . .
- 3 Determining STV (sling to vertical) considering any height restrictions.

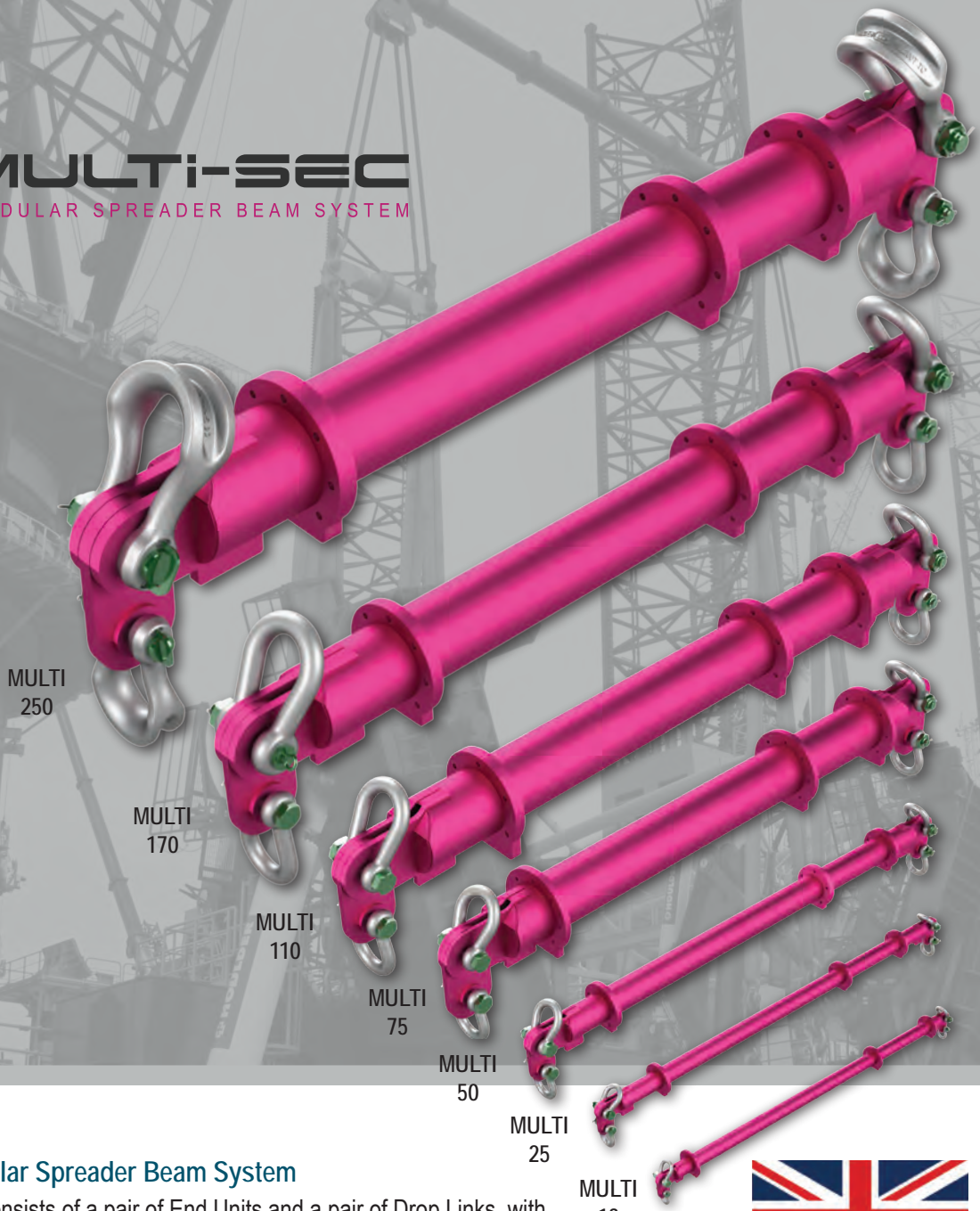
Standard Off-the-Shelf Range

Multi 13		Multi 110	
Up to 13t at 5.25m	Up to 5.75m at a lower capacity	Up to 110t at 14m	Up to 17m at a lower capacity
Multi 25		Multi 170	
Up to 25t at 6m	Up to 7m at a lower capacity	Up to 170t at 12.5m	Up to 17m at a lower capacity
Multi 50		Multi 250	
Up to 50t at 8m	Up to 9.5m at a lower capacity	Up to 250t at 10.75m	Up to 19m at a lower capacity
Multi 75		<i>Other sizes available upon request!</i>	
Up to 75t at 13.25m	Up to 16m at a lower capacity		

30° STV (Sling to Vertical)

MULTI-SEC

MODULAR SPREADER BEAM SYSTEM



Multi-Sec Modular Spreader Beam System

Each assembly consists of a pair of End Units and a pair of Drop Links, with interchangeable Struts which can be bolted into the assembly between the End Units to either lengthen or shorten the beam to suit the requirements of your specific lift.



Made in Great Britain

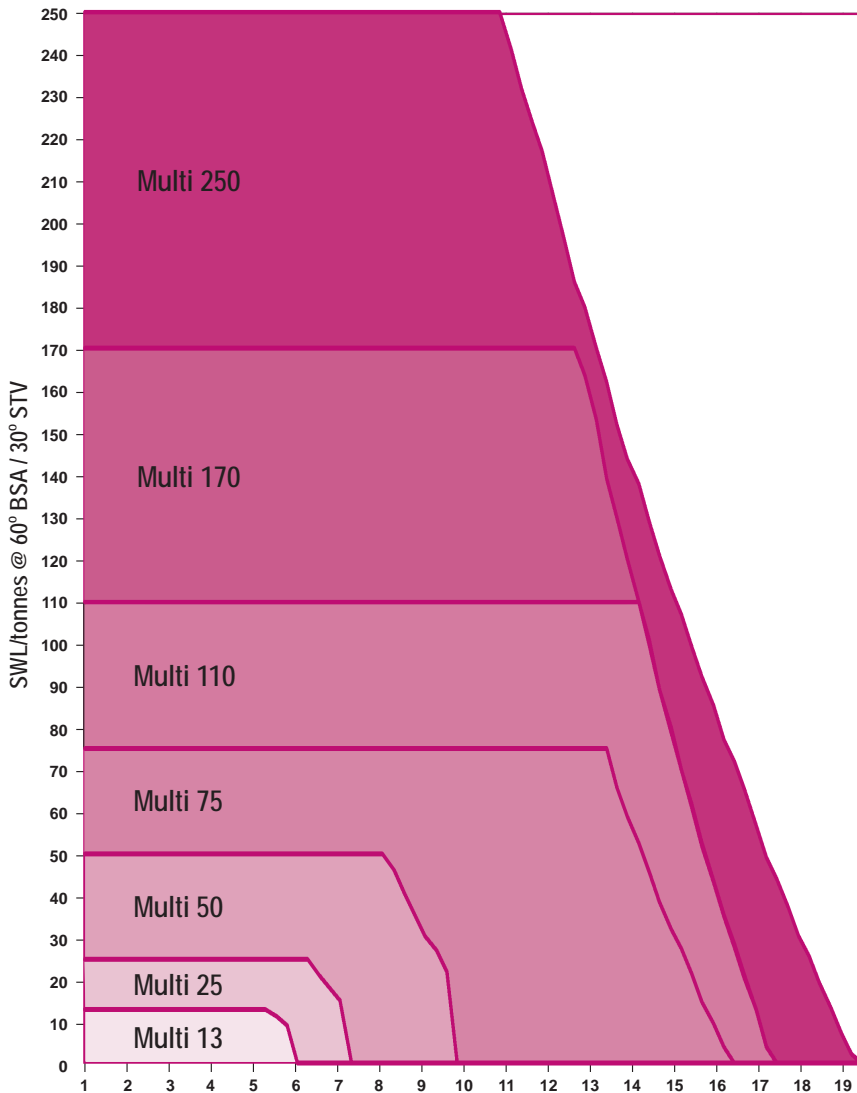
Component Selection

System	Strut (kg)							End Unit (kg)		Drop Link (kg)	Shackle (kg)	
	0.25m	0.5m	0.75m	1m	2m	4m	6m	0.5m	0.75m		Top	Bottom
Multi 13	8.5	11.8	15.2	18.5	31.9	-	-	14.1*	-	2.3*	3.7*	1.8*
Multi 25	-	23.8	30.5	36.8	62.8	-	-	25.6*	-	5.9*	8.2*	6.5*
Multi 50	-	46.6	57.8	69.1	114.1	204.6	-	64.8*	-	15.2*	19.9*	14.2*
Multi 75	-	96.0	115.2	134.4	211.4	365.2	-	145.5*	-	40.9*	39.6*	28.3*
Multi 110	-	-	179.4	205.7	310.8	521.0	-	-	245.6*	48.4*	62.0*	39.6*
Multi 170	-	-	175.1	201.3	306.4	516.6	-	-	306.2*	68.2*	110.0*	62.0*
Multi 250	-	-	221.1	241.7	319.8	476.0	632.2	-	421.6*	100.1*	205.0*	92.0*

Maximum allowable components per assembly 10

* weight per unit x2

Load v Span Chart - Multi-Sec Spreader Beam Standard Range



Designed in accordance with:

- BS EN 13155:2003+A2:2009 Cranes - Safety - Non-fixed load lifting attachments
- BS EN 1993-1-1:2005 Eurocode 3
- DNV Standard for Certification No. 2.22 Lifting Appliances 2013
- DNV GL-ST-N001 Noble Denton Marine Services Rules and Guidelines
- EC Machinery Directive 2006/42/EC
- LOLER:1998 (Lifting Operations and Lifting Equipment Regulations)
- PUWER: 1998 (Provision and Use of Work Equipment Regulations)



What Size Shackle Do I Need?

Multi 13

Standard Bow Shackle
Top 9.5t / Bottom 6.5t

Multi 25

Standard Bow Shackle
Top 17t / Bottom 13.5t

Multi 50

Standard Bow Shackle
Top 35t / Bottom 25t

Multi 75

Standard Bow Shackle
Top 55t / Bottom 42.5t

Multi 110

Standard Bow Shackle
Top 85t / Bottom 55t

Multi 170

Heavy Duty Bow Shackle
Top 120t
Green Pin Standard Bow Shackle
Bottom 85t

Multi 250

Sling Saver Wide Body Bow Shackle
Top 200t / Bottom 125t



Durham Lifting

Branch - Durham

Unit D, Whinfield Drive
Newton Aycliffe Industrial Estate, DL5 6AU
Ph: 01325 318 844 Fax: 01325 318 844
email: sales@durhamlifting.co.uk

Head Office - Teesside

Britannia Testhouse
Romaldkirk Road, Middlesbrough TS2 1HB
Ph: 01642 240 672 Fax: 01642 247 709
email: info@durhamlifting.co.uk

www.durhamlifting.co.uk